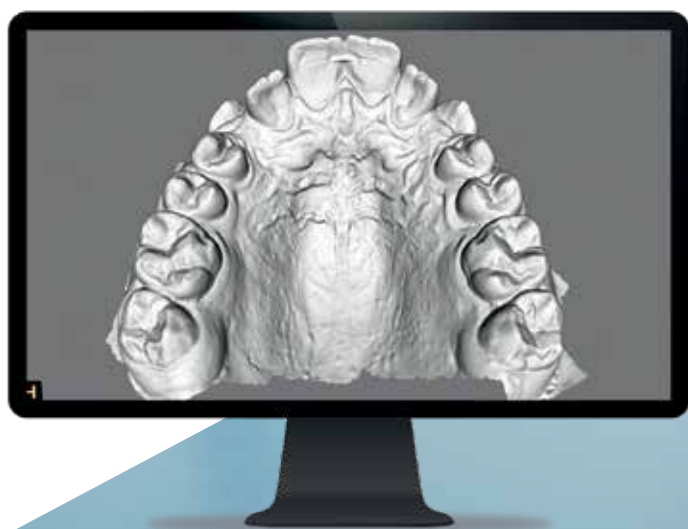


# JUST AS DRAMATIC ONLY MONOCHROMATIC

## An affordable entry into digital

Make capturing digital impressions as convenient, ergonomic and economical as possible with the CS Access intraoral scanner. The perfect choice for general dentists or doctors who are looking for an easy-to-use digital impression system, CS 3600 Access provides you with the same quality, accuracy and efficiency of the CS 3600 but with monochromatic scanning.

Featuring restorative, orthodontic and implant-borne restorative workflows, the CS 3600 Access allows you to enter the digital realm with comfort and confidence. Only Carestream Dental offers the openness, product configuration flexibility and value-added services necessary to grow your practice on your terms—while enjoying best-in-class CAD/CAM technology.



### ACCURACY AT YOUR FINGERTIPS

*Surpasses leading competitors by delivering the best performance in terms of overall trueness.<sup>2</sup>*



### GET ALERTED ON MISSING DATA

*Green arrows and green and yellow colored highlights alert you of any gaps or holes that need to be rescanned for optimal detail.*



# GOING DIGITAL HAS NEVER BEEN THIS EASY

The CS 3600 produces highly accurate monochromatic images, providing you with the precision and accuracy needed to design custom-fit restorations and appliances.

Interchangeable tips come in three styles—including the shortest autoclavable tip height in the industry—to optimize scanning and patient comfort.<sup>1</sup> The tips can be autoclaved up to 60 times, reducing consumable costs and ensuring proper sterilization.<sup>3</sup>

## USER-FRIENDLY ENTRY INTO DIGITAL

*Transition easily to digital with an intuitive, guided step-by-step user interface.*

## UPGRADE ON YOUR TERMS

*Easily upgrade to HD 3D color at any time for full spectrum digital impression scanning.*

## OPEN SYSTEM FLEXIBILITY

*Enjoy clearer communication with your lab thanks to the versatility of DICOM, open .STL and .PLY file outputs.*

## NO FIXED DISTANCE

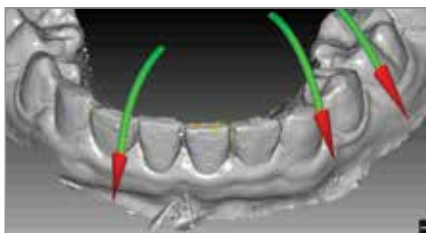
*With a broad focal length, you can hover around, above or rest the scanner on a tooth, allowing you to choose how you scan.*

## INTELLIGENT MATCHING SYSTEM

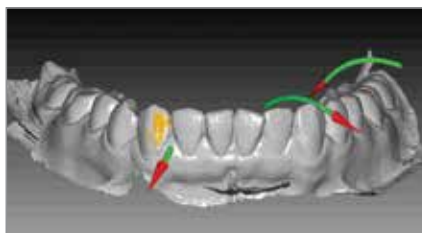
*With protocol-free scanning, you can start, stop or rescan from anywhere in the mouth.*

## STREAMLINED WORKFLOW

*Choose from three dedicated continuous scanning workflows: restorative, orthodontic and implant-borne restorative.*



*Green arrows display the ideal direction in which the user should rescan missing information, providing real-time feedback that significantly increases scanning efficiency.*



*Yellow and green highlights alert you of any gaps or holes in the scan, indicating that the area needs to be rescanned for optimal detail.*



*The software provides a pressure map of the occlusal surface, allowing you to better analyze patient occlusion.*

## CS 3600 ACCESS

<sup>1</sup>CS 3600 Access and posterior tip are works in progress, not available for sale pending medical device regulatory clearances and registrations

<sup>2</sup>Imburgia et al. BMC Oral Health (2017) 17:92 DOI 10.1186/s12903-017-0383-4

<sup>3</sup>Tips can be autoclaved up to 60 times if the exposure is limited to 134°C at no more than 4 minutes and if gauze is used, as outlined in the CS 3600 Family Safety, Regulatory, and Technical Specifications User Guide (9J8269)